

AGROMETEOROLOGICAL BULLETIN

Doc No: TEA 3/3/7/2 F-004

Revision No: 1

Effective Date: 01.07.2017

Page No: 1 of 5

Approved by:



**REPORTING PERIOD:
11 – 20 DECEMBER 2025**



ISSUE No.: 08

SEASON: 2025/26

RELEASED:24/15/2025

CONTENTS

CONTENTS	1
HIGHLIGHTS	1
RAINFALL AND TEMPERATURES	2
RAINFALL	2
TEMPERATURES	3
MAIZE AND OTHER CROPS	3
CURRENT FARMING ACTIVITY	3
MAIZE CROP STAGE AND CONDITION .	3
OTHER CROPS	3
LIVESTOCK AND PASTURES	4
WATER SITUATION	4
MEDIUM-TERM OUTLOOK	4
RAINFALL	4
TEMPERATURE	4
SOIL MOISTURE	4
WIND SPEED	4

HIGHLIGHTS

- **An increase in rainfall observed...**
- **Fair vegetation condition...**
- **Few reported land preparation activities...**
- **Improvement in rainfall is anticipated...**
- **Cool to warm temperatures forecasted...**
- **Improvement in soil moisture expected...**

AGROMETEOROLOGICAL BULLETIN

Doc No: TEA 3/3/7/2 F-004

Revision No: 1

Effective Date: 01.07.2017

Page No: 2 of 5

Approved by:

RAINFALL AND TEMPERATURES

RAINFALL

Significant rainfall was received in the 2nd dekad of December 2025 (Figure 1) and (Map 1).

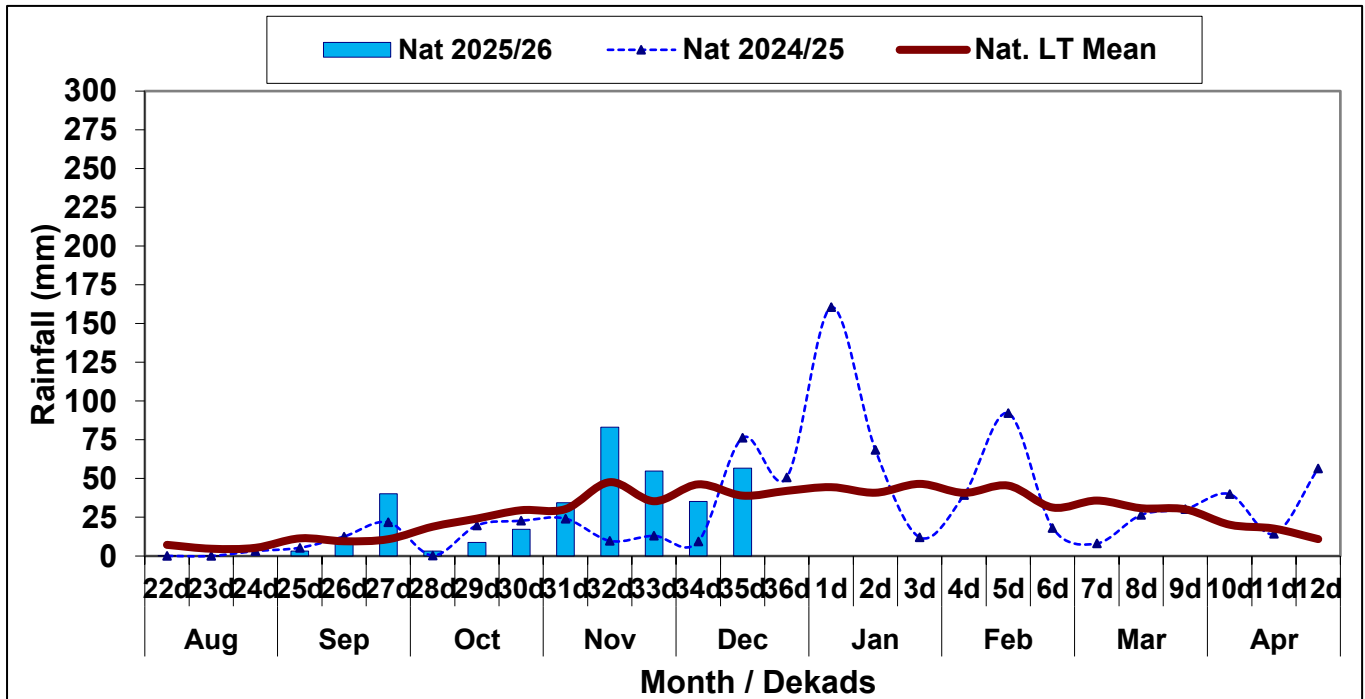
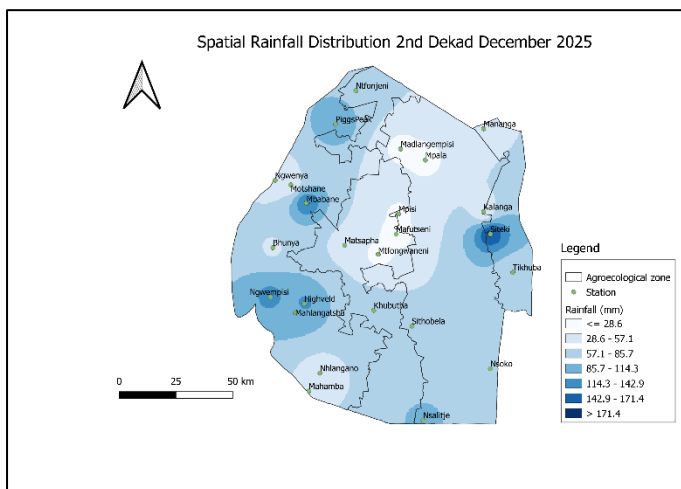
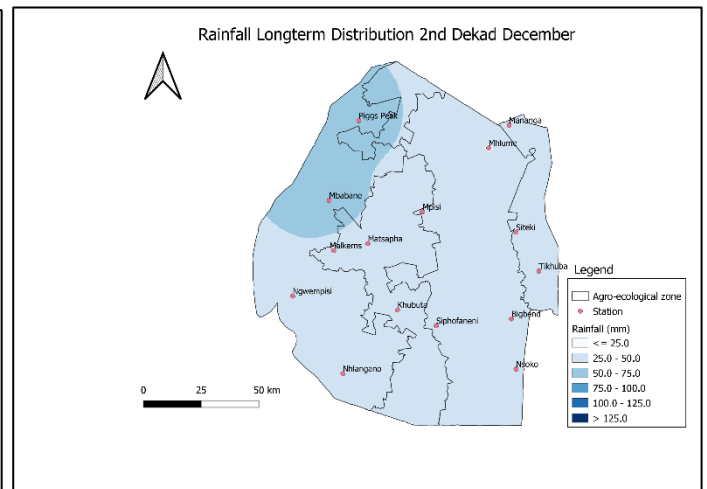


Figure 1: Rainfall distribution 2nd dekad December 2025



Map 1: Spatial rainfall distribution 2nd dekad December 2025



Map 2: Rainfall Longterm distribution 2nd dekad December

Compiled and Issued by: Agrometeorological Unit,

Swaziland Meteorological Service, Ministry of Tourism and Environmental Affairs.

Box 2652, Mbabane, Swaziland. (+268) 2404 8859 / 2404 6274. Fax: 2404 1530

E-mail: dudu@swazimet.gov.sz

AGROMETEOROLOGICAL BULLETIN

Doc No: TEA 3/3/7/2 F-004

Revision No: 1

Effective Date: 01.07.2017

Page No: 3 of 5

Approved by:

All the Agro-ecological zones observed Normal to Above Normal rainfall during the reporting period (**Table 1**).

Table 1: Rainfall (mm) 2nd dekad December 2025

	HV	MV	LV	LP	
2024/25	89	100	32	62	
Average	54	39	29	32	
2025/26	72	41	40	120	
Anomaly	17	1	12	87	

TEMPERATURES

Cool to warm temperatures were observed during the reporting period (**Figure 2**).

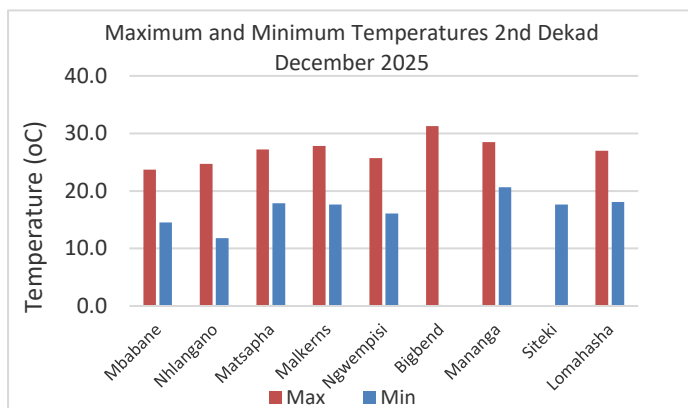


Figure 2: Maximum and Minimum temperatures 2nd dekad of December 2025

MAIZE AND OTHER CROPS

CURRENT FARMING ACTIVITY

Most farmers have planted maize as sufficient rainfall continues to be received in most parts.

MAIZE CROP STAGE AND CONDITION

Germinated maize in early vegetative stage is in good condition.

OTHER CROPS

No other crops have been reported to have been planted.

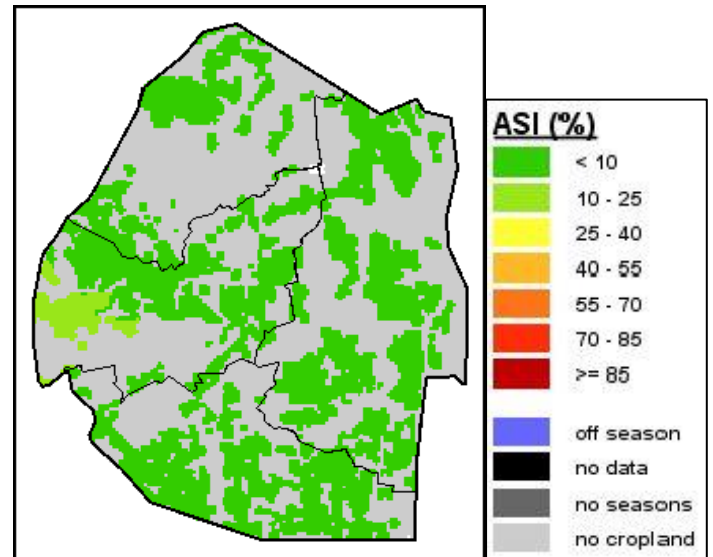


Image 1: Agriculture Stress Index 2nd dekad December 2025 Source: FAO-GIEWS

AGROMETEOROLOGICAL BULLETIN

Doc No: TEA 3/3/7/2 F-004

Revision No: 1

Effective Date: 01.07.2017

Page No: 4 of 5

Approved by:

LIVESTOCK AND PASTURES

Livestock is in good condition save for the few affected by the outbreak of the Foot and Mouth disease.

WATER SITUATION

Dam levels have improved significantly as a result of continuous rainfall in the past ten days.

MEDIUM-TERM OUTLOOK

RAINFALL

Significant in rainfall is expected in the outlook period.

TEMPERATURE

Warm to hot temperatures are anticipated in the outlook period.

SOIL MOISTURE

An improvement in soil moisture is expected in the outlook period.

WIND SPEED

Wind will generally be light to moderate in the outlook period

NB: Outlook period is ten days from date of issue

AGROMETEOROLOGICAL BULLETIN

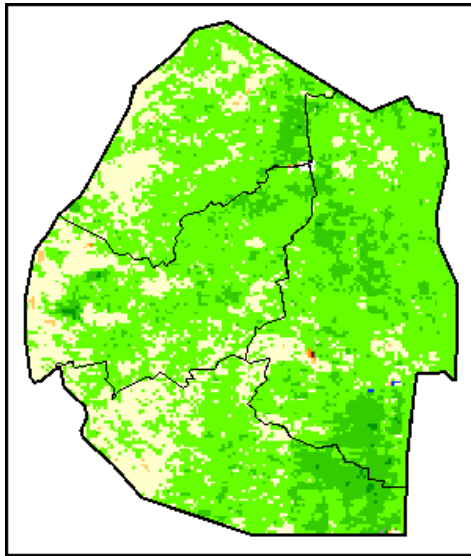
Doc No: TEA 3/3/7/2 F-004

Revision No: 1

Effective Date: 01.07.2017

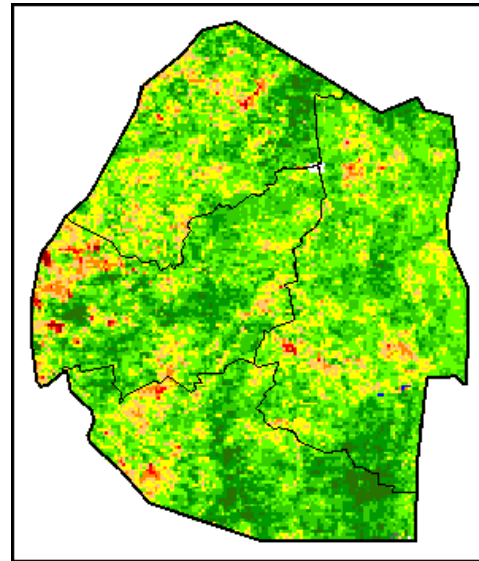
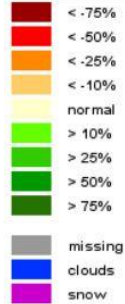
Page No: 5 of 5

Approved by:



Legend

Difference to LTA



Legend

VHI

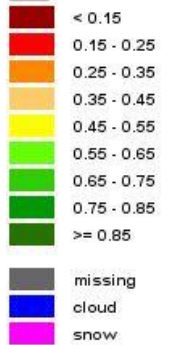


Image 2: Normalized Difference Vegetation Index (NDVI) Anomaly (2nd Dekad December 2025)
Source: FAO-GIEWS

Image 3: Vegetation Health Index (VHI) (2nd Dekad December 2025)
Source: FAO-GIEWS